

Disc Brush

Structure now possible even on the edge!

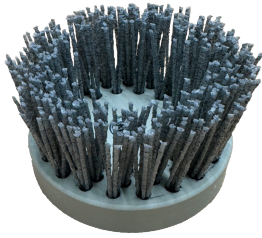


Our new disc brushes are the perfect addition to our **TRIO brushing discs**. They make it possible to give wooden floors a brushed look even directly **on the edge** with only one work step.

The disc brush can be quickly and easily mounted on an **angle grinder** or, with an adapter, on a **cordless screwdriver** or **drill** - and you're ready to go!



Nylon Disc brush



Brush bristles made of abrasive nylon fibers for structuring of softwood floors (e.g. pine, spruce, pitch pine).

Stainless steel Disc brush



Aggressive brush bristles made of stainless steel wires for pronounced structuring of hardwood floors (e.g. oak).

Technical data

Disc diameter:	100 mm
Base body material:	Polypropylene
Bristles material:	Abrasive nylon fibers / corrugated stainless steel wire
Bristles material diameter:	1,6 mm / 0,2 mm
Bristles height:	40 mm / 20 mm
Bristles rows:	3

Instructions for use - IMPORTANT!

See "Overview LÄGLER brushing disc for the TRIO" (Art.Nr: 00.000.51.102)

Adapter for Disc brush



Compatible with cordless screwdrivers or drills.
Also usable with other power tools with a M14 screw thread.



+49 (0) 7135 98 90 0



info@laegler.com